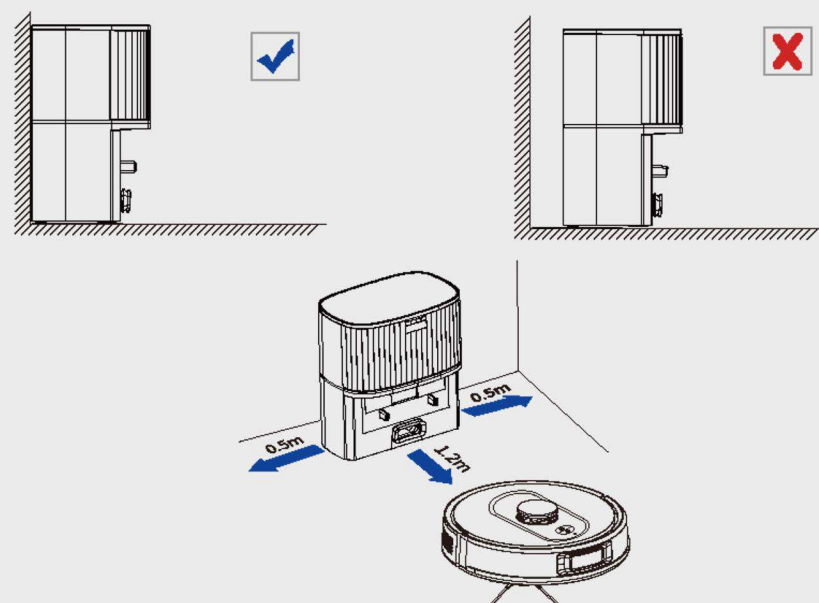


Quick Start Guide

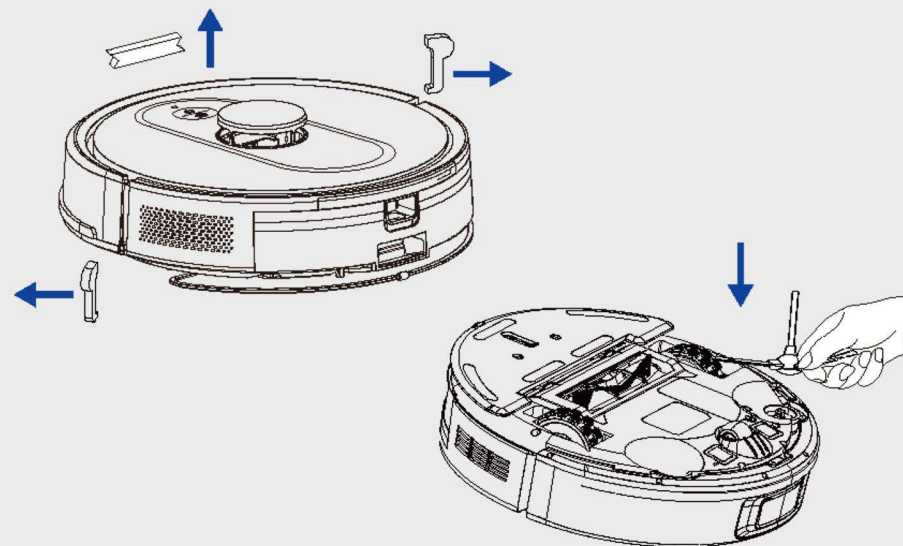
How to Use Your Robot

1 Place and Power Up the Charging Base



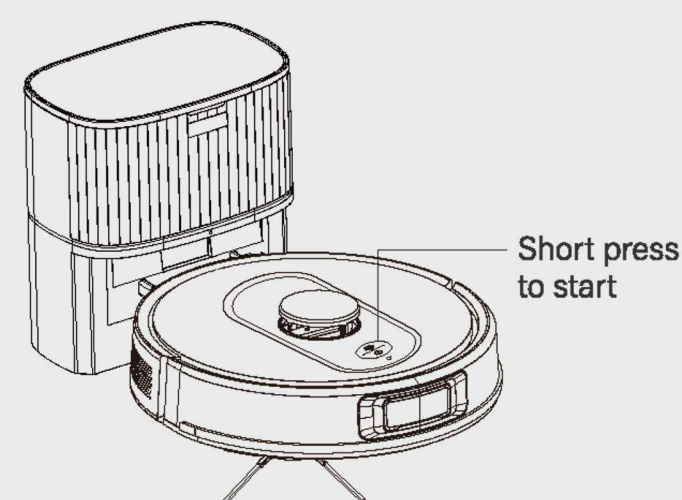
- Charging Base Position Place the Charging Base on a hard, level surface and against a wall.
- Remove objects within 3 ft/1 m of the left and right side and within 6 ft/2 m of the front of the Charging Base.
- Install the Charging Base and plug the power adapter into a wall outlet.

2 Mounting Accessories



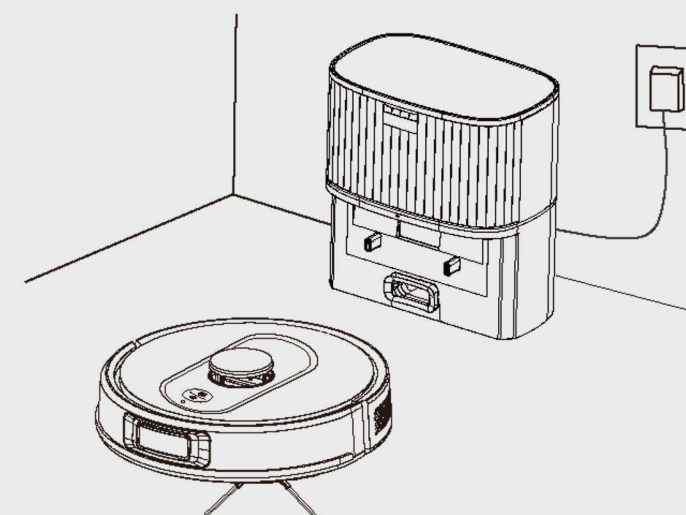
- Remove the Foam Block next to the bumper and install the Side Brush before use.
- **Tip:** If you need to use the mopping function, please fill the Water Tank and install the Mop correctly.

3 Turn on the Robot



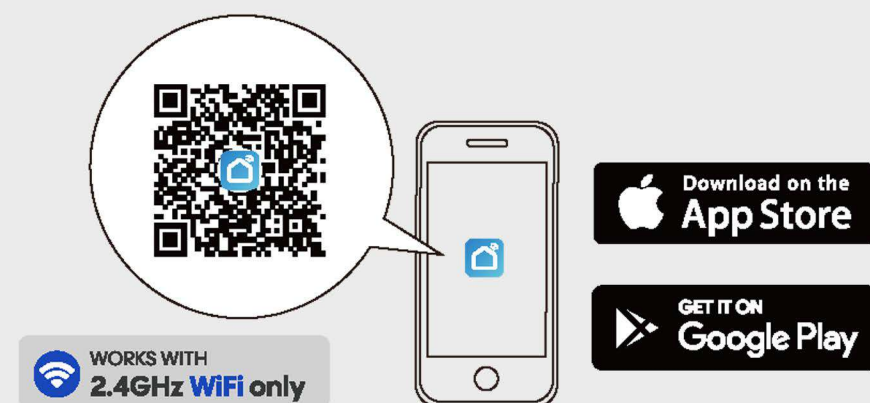
- Press the Power Button for 3 seconds to turn on the Robot.
- **Tips:** If the indicator light does not activate, please fully charge the machine and try again.

4 Charge Your Robot



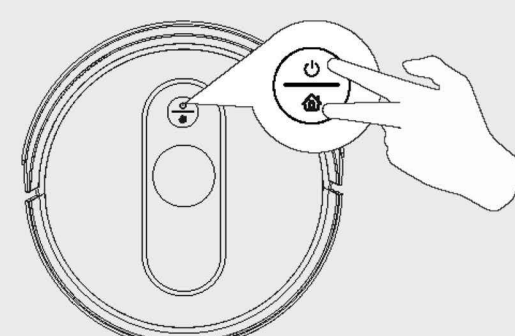
- When the Charging Base connects to AC power, the LED Indicator on the Charging Base is SOLID WHITE.
- To use the machine for the first time, it needs to be started from the charging stand.
- Always keep the Charging Base plugged in, otherwise Robot will not automatically return.

5 Download the Smart Life App



- Your smartphone or tablet is connected to a Wi-Fi network. Your smartphone or tablet is running with IOS 11.0 (or above) or Android 6.0 (or above).
- The 2.4 GHz band wireless signal (**NOT 5GHz**) is enabled on your wireless router.
- The Wi-Fi status light on robot is flashing blue.
- The robot is connected to the Charging Base to ensure it has enough power during setup.

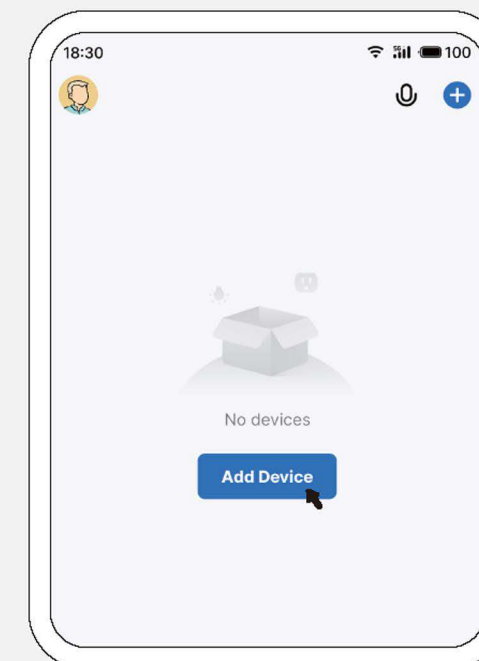
6 Reset the Wi-Fi Connection



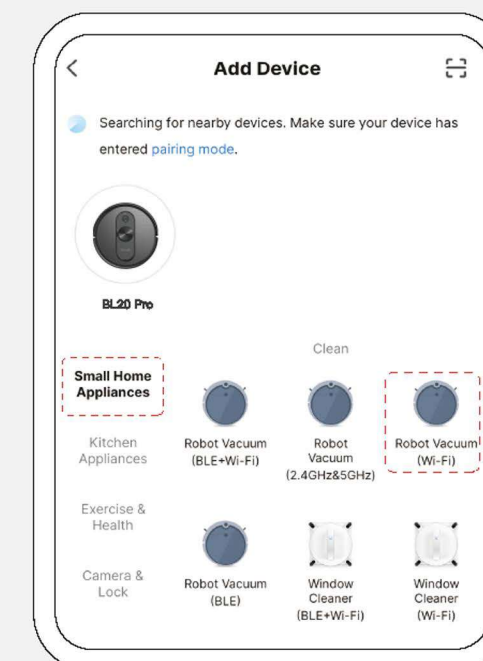
- Press and hold the Power button and Recharge button at the same time for about 5 seconds until you hear one beep.
- The WiFi Indicator Light flashes slowly and the ROBOT enters into AP network configuration mode.
- **Tip:** It is recommended to turn on the Bluetooth function of your phone, which will help to match the network faster and successfully.

APP Connection

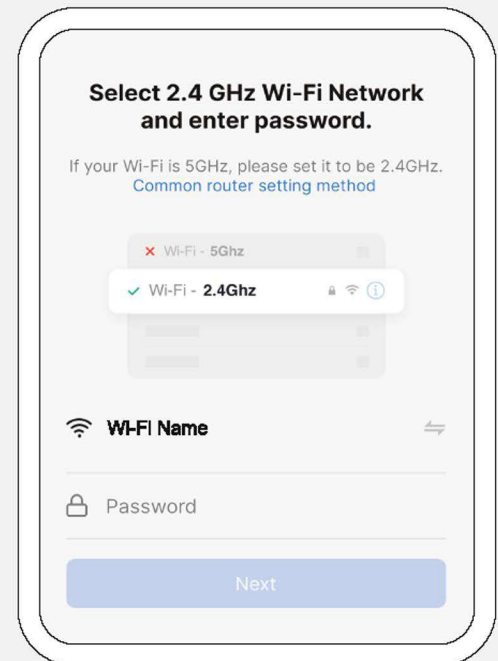
After completing the account registration, please follow the following step-by-step screenshots and the APP page guidelines to make the Robot connected to the Internet.



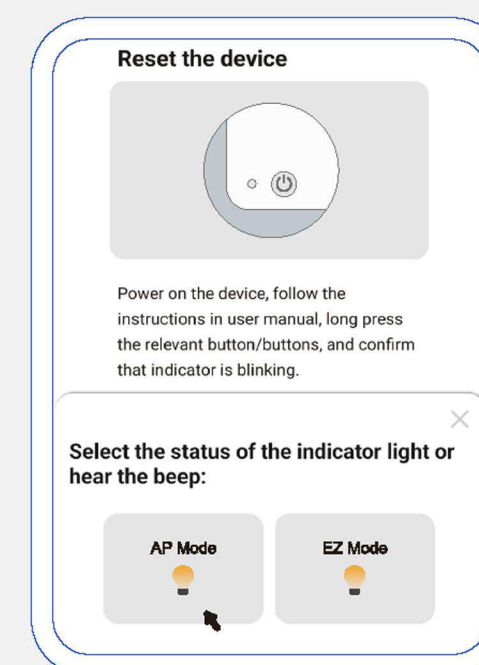
- 1 After registration and login, click the "+" sign in the upper right corner, or click the "Add Device".



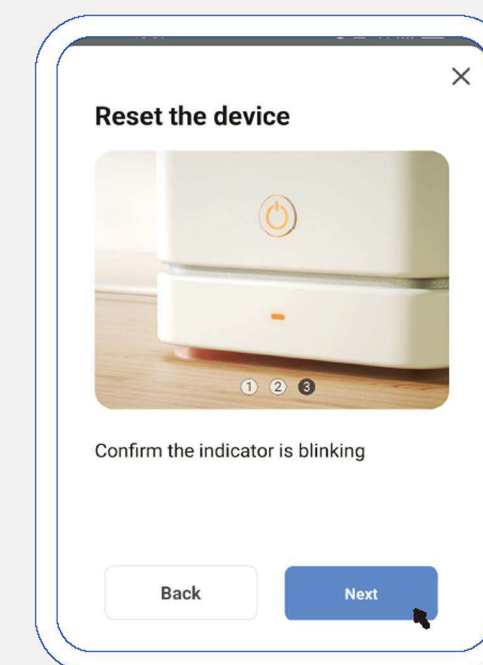
- 2 Click on the image of the corresponding Robot Model to add it to your account. You can also connect via Bluetooth Mode, click "Picture of BL20 Pro" to proceed to the next step.



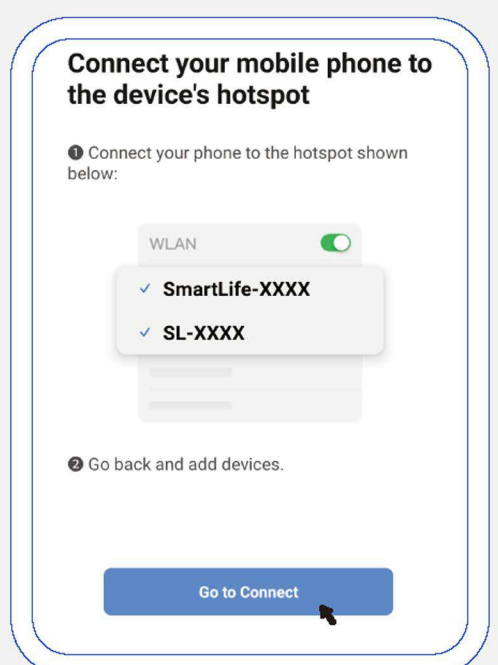
- 3 Enter your Wifi name & Password correctly and follow the prompts on the APP to operate the machine.



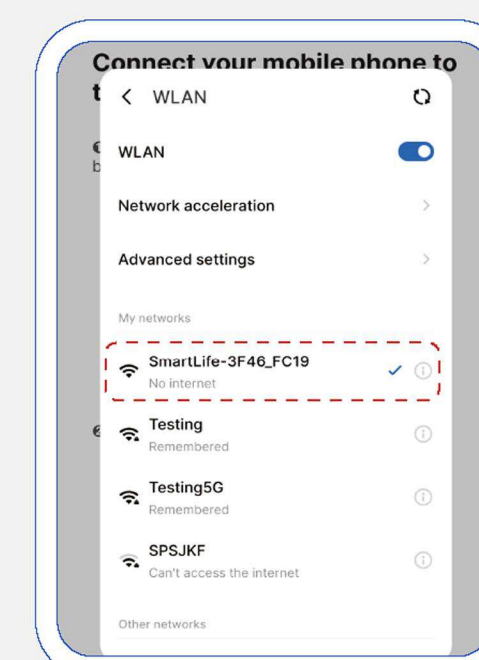
- 4 There are two connection modes, "AP Mode" and "EZ Mode". Please select "AP Mode".



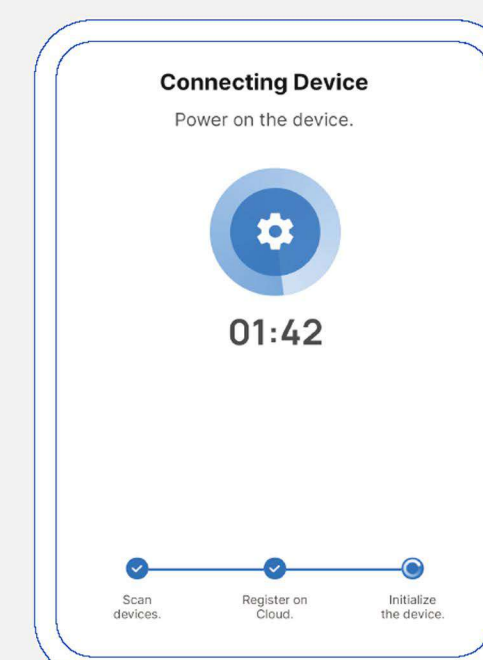
- 5 Hold the Power and Recharge buttons for 5s at the same time, Robot will response with "beeping" and the Wifi indicator light Flash Slowly. Then click the "Next".



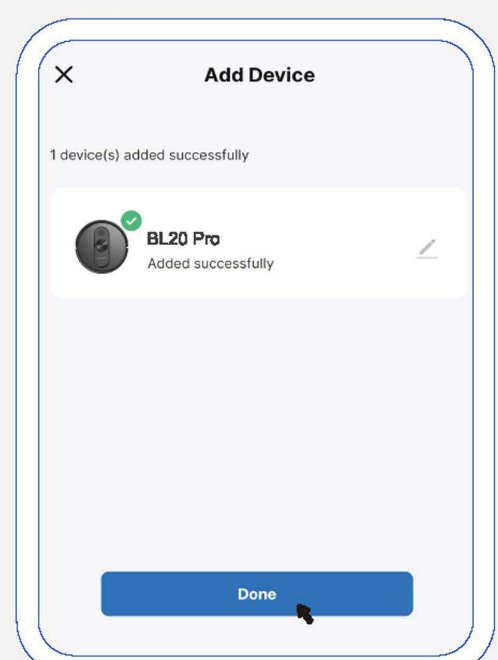
- 6 Click "Go to Connect" to enter the WiFi selection interface.



- 7 Please select the WiFi signal sent by the equipment, named after "SmartLife-XXXX". Then return to the application connection.



- 8 When the device is connected to the Internet, please pay attention to the tips in the interface.



- 9 When prompted "Add successfully", the device icon will be displayed, and the name can be changed according to its own preferences, and click "Done".